

# ACCESSORIES

Torque Devices

Accessories

Fixation Devices

## Torque Devices (Pin Vise)

Cap Material: Polycarbonate Body Material: Polypropylene



Salmon. Fits Guide Wires  
.009" to .018"

**510061001**

Salmon. Fits Guide Wires  
.013" to .024"

**502013001**

Salmon. Fits Guide Wires  
.018" to .038"

**502195001**



Green. Fits Guide Wires  
.009" to .018"

**510061002**



Royal Blue. Fits Guide Wires  
.009" to .018"

**510061003**



White. Fits Guide Wires  
.009" to .018"

**510061004**

## Sea Dragon™ Torque Device



Fits Guide Wires From .018" (0.46mm)  
to .038" (0.97mm)

**501695001**

## H2O Torq™ Torque Device



Orange. Fits Guide Wires  
From .025" (0.64mm) to  
.040" (1.02mm)

**701655001**



Yellow. Fits Guide Wires  
From .010" (0.25mm) to  
.020" (0.51mm)

**701656001**

# Accessories



Metal Guide Wire Insertion Tool  
 Hub Material: Acrylic  
 Inner Lumen: 0.022"  
 Shaft Material: Stainless Steel

**501994002**



Plastic Guide Wire Insertion Tool  
 Hub Material: High Density Polyethylene  
 Inner Lumen: 0.028"  
 Shaft Material: High Density Polyethylene

**MAP600B**



BowTie™ Guide Wire  
 Insertion Tool Fits Guide  
 Wires  $\leq 0.018''$  (0.46mm)

**502423001**



Peel-Away Guide  
 Wire Insertion Tool,  
 Tapered Tip,  
 Inner Lumen 0.043"

**502199002**



Peel-Away Guide  
 Wire Insertion Tool,  
 Non-tapered Tip,  
 Inner Lumen 0.055"

**502199003**



J-Straightener  
 for .035" wires

**101415001**



J-Straightener  
 for .038" wires

**101415002**



Natural Color Retention Clip

**100730002**



Ringmaster™ Guide Wire Basin

**RM01**

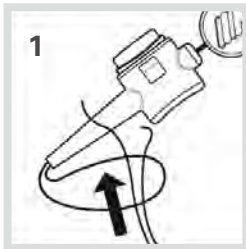


2,500cc Guide Wire Bowl

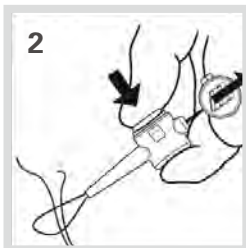
**M-P2000**

# Suture Retention Device

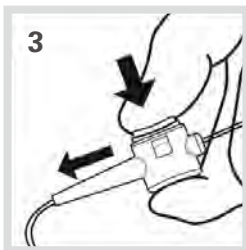
## Easy, Step-by-Step Instructions



Place purse-string suture around the sheath; feed free ends of the suture through the snare loop of the device.



Depress the white button; pull the green tab to thread the free ends of the suture through the device. Discard green pull tab.



Depress the white button and slide the SLIP-NOT™ forward to produce tension. Release the white button to secure the suture within the device.



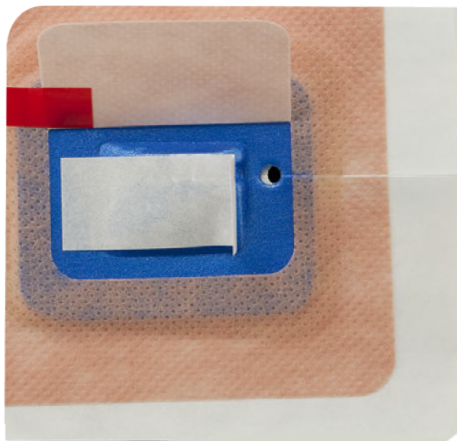
SLIP-NOT™  
**SRD100**

## Fixation Devices



Revolution™ Needleless  
Non Vascular Catheter Securement  
Device (6F-24F)

**CFG624**



StayFIX™ Securement Device for  
Percutaneous Catheters

5F-14F **680ME**

14F-22F **685ME**